



SOLENOID VALVES

■ G75-A 1/8", 1/4" 2W, 3W NC, NO	4
■ G75-U Universal 1/8" 3W NO	6
■ GALIT 3W NC, NO	8
■ GEM-A 1/8", 1/4" 2W NC, NO	10
■ GEM-A 1/8", 1/4" 3W NC, NO	12
■ GEM-A3P Latch 3 positioning manual override	14
■ GEM-U Universal 1/8", 1/4"	16
■ G60 1/8" Latch, pulse operated 3W	18



SOLENOID VALVES

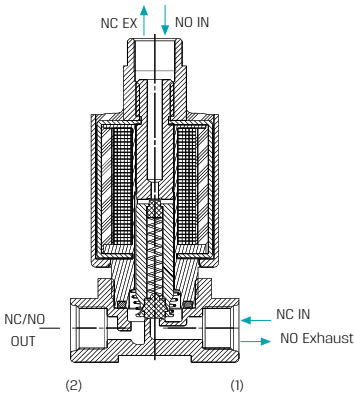
G75-A | 1/8", 1/4" 2 Way, 3 Way NC, NO



G75-A Brass



G75-A Plastic



Technical Data

Function	2 Way, 3 Way NC, NO
Ports size	1/8" and 1/4" BSP & NPT
Orifice size	See table
Pressure range	See table
Temperature range	Fluid : 5°C to 50°C Ambient : -10°C to 50°C
Materials in contact with media	Manual override: Reinforced Nylon Main Valve: Brass or Reinforced Nylon Solenoid Operator: Stainless Steel AISI 300 & 400 series Seals: EPDM
Coil voltage	• Voltage and power consumption - see table
Standard protection class	IP66

• Available with brass adaptor upon request.

Max. Pressure (bar) table

Function	Orifice (mm)	AC	DC	DC Latch
2W NC	up to 2.0	12	12	12
3W NC	1	16	12	16
	1.2	11	9	11
3W NO	1.6	6	5	6
	1.0	16	16	16
	1.2	12	12	12
	1.6	8	8	8

Voltage & Current table

Solenoid	Voltage	Inrush [A]	Holding [A]
2W 50 Hz	V +10% n-20%	0.3	0.19
2W 60 Hz		0.2	0.14
3W 50/60 Hz		0.125	0.125
DC		4.5W	

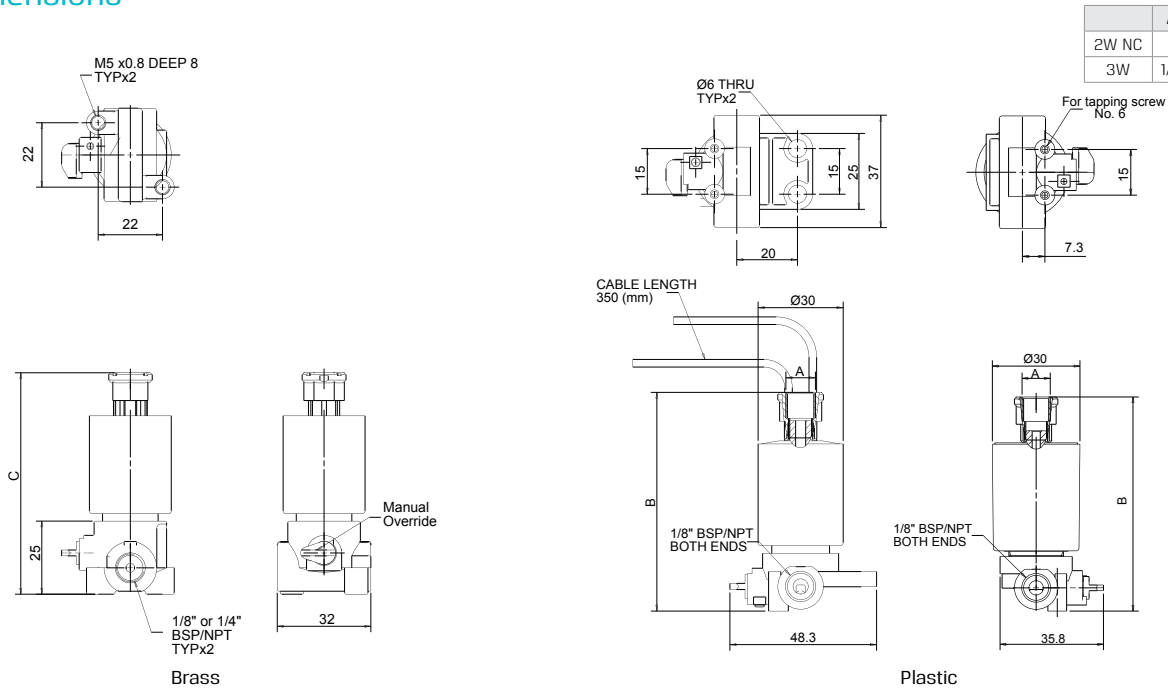
Voltage & Power Consumption

	AC (W)	DC (W)
	50 Hz	
V	2	4.5
12	•	•
24	•	•
110	• 2W only	

• Available options

G75-A | 1/8", 1/4" 2 Way, 3 Way NC, NO

Dimensions



How to Order

G75-A	-	TYPE		PORT		FUNCTION		MANUAL OVERRIDE		ORIFICE		-	VOLTAGE		WIRES		
		with flange	1	1/8" BSP	10	2W NC	1	None	0	1.0	1		24V AC	1	two	null	
		without flange	2	1/8" NPT	11	3W NC	3	Plastic ⁽²⁾	1	1.2	2		24V AC w/out Diode	1R	three ⁽⁴⁾	a	
		Brass	3	1/4"BSP ⁽¹⁾	20	3W NO	4				1.6	3		12V AC	3		
				1/4"NPT ⁽¹⁾	21						2.0	4		12V DC	4		
													24V DC	5			
													24 Latch(23Ω)	6			
													110V AC ⁽³⁾	7			
													6 Latch (4Ω)	B			
													12 Latch (9Ω)	C			
													16 Latch (12Ω)	D			

Example : G75-A-110320-1

G75 with flange, 1/8"BSP, 3W NC, 1.2 orifice, no manual override, 24V AC coil.

G75-A - 1 10 3 2 0 - 1

- (1) Brass only
 (2) Recommended for AC and continuous DC only
 (3) Only available in 2W - see dimensions details on page 94.
 (4) For Latch only

* To order valves manufactured according to your specific requirements, please contact our technical sales department.

SOLENOID VALVES

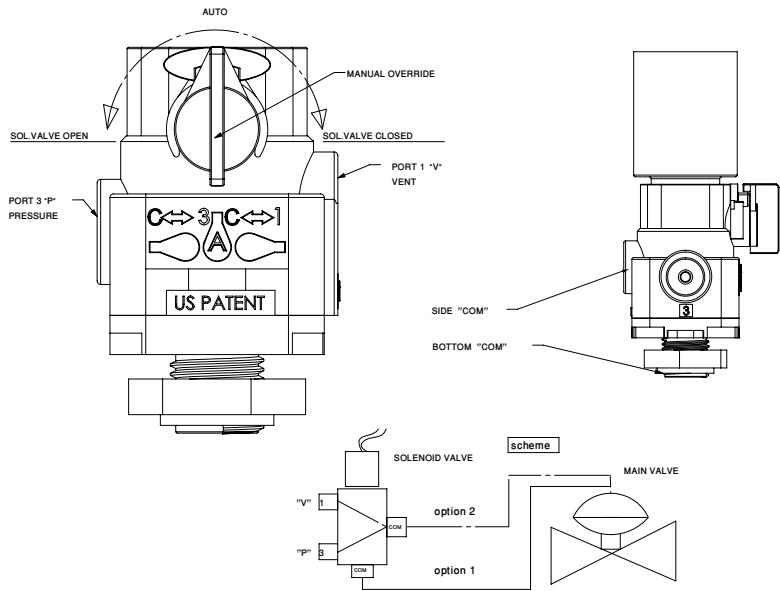
G75-U | 1/8" 3 Way NO



G75-U AC/DC



G75-U Latch



Technical Data

Function	3 Way NO
Ports size	1/8" BSP & NPT
Orifice	1.8 mm
Pressure range	0 to 10 bar
Temperature range	Fluid : 5°C to 50°C Ambient : -10°C to 50°C
Materials in contact with media	Manual override: Reinforced Nylon Main Valve: Reinforced Nylon Solenoid Operator: Stainless Steel AISI 300 & 400 series Seals: EPDM Spring: Stainless Steel AISI 300 series
Leads	18 AWG x 375 mm
Manual Override	1. A - Auto•passage•Com-port 3 open 2. Turn clockwise•passage•Com-port 1 open 3. Turn counter-clockwise•passage•Com-port 3 open Colors: Orange : AC/DC Volt Blue : Latch
Plumbing COM port	You can choose between "COM" at the side or "COM" at the bottom of the valve, while the other port should be plugged.
Coil voltage	• Voltage and power consumption - see table • All Baccara coil voltages are ± 10% of nominal
Standard protection class	IP67

* The operator is only suitable for these G75-U valves.

Voltage & Power Consumption

	AC (W)	DC (W)
	50 Hz	
V	2	4.5
12	•	•
24	•	•
110	•	
	2W only	

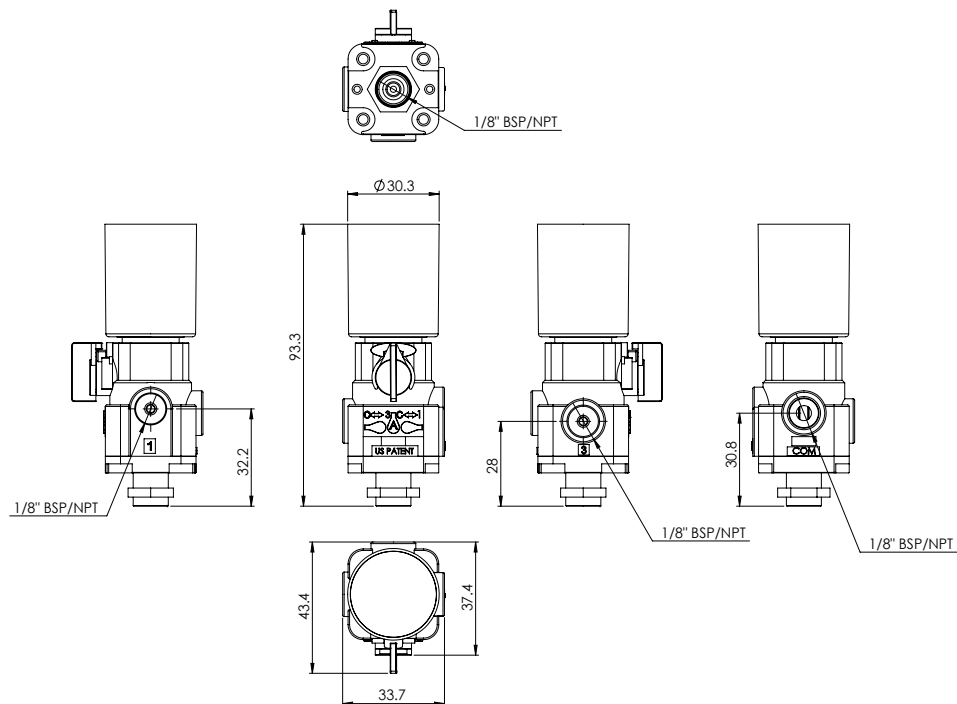
• Available options

Voltage & Current table

Solenoid	Voltage	Inrush [A]	Holding [A]
2W 50 Hz	V +10% n-20%	0.3	0.19
2W 60 Hz		0.2	0.14
3W 50/60 Hz		0.125	0.125
DC		4.5W	

G75-U | 1/8" 3 Way NO

Dimensions



How to Order

G75-U	-	PORT		FUNCTION		MANUAL OVERRIDE ⁽¹⁾		-		VOLTAGE		WIRES	
		1/8" BSP	10	3W NO	4	Plastic	1	24V AC	1	two	null		
		1/8" NPT	11					12V AC	3	three ⁽²⁾	a		
								12V DC	4				
								24V DC	5				
								Latch (23Ω)	6				
								110V AC	7				
								Latch (4Ω)	B				
								Latch (9Ω)	C				
								Latch (12Ω)	D				

Example : G75-U-1041-B

Is a GEVA 75 1/8" BSP valve, 3WNO, with plastic manual override, Latch (4Ω) and two wires .

G75-U - 10 4 1 - B

(1) For latch solenoid :

While returning to "Auto" mode, the solenoid must be changed to the required mode :
"latch" (solenoid valve closed) or "unlatch" (solenoid valve open), then turn the
manual control to "Auto" mode.

(2) For latch only

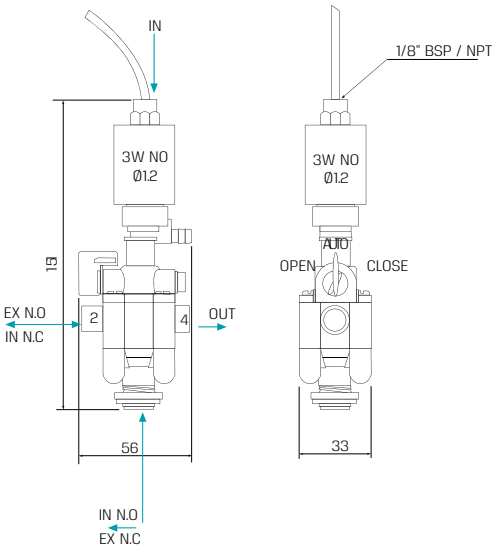
* To order valves manufactured according to your specific requirements, please contact our technical sales department.

SOLENOID VALVES

GALIT | 3 Way pilot operated NC, NO



G75-GALIT



Technical Data

Function	3 Way NC, NO
Ports size	1/8" BSP & NPT
Orifice size	5mm
Pressure range	1 to 10 bar
Temperature range	Fluid : 5°C to 50°C Ambient : -10°C to 50°C
Materials in contact with media	Main Valve: Reinforced Nylon Solenoid Operator: Stainless Steel 300 & 400 series Seals: NBR Spring: Stainless Steel AISI 300 series
Manual override	Manual override with 3 positions : <ul style="list-style-type: none">• AUTO - for automatic operation (valve is open when solenoid is energized)• MANUAL - valve is kept open• CLOSE - valve is kept closed
Solenoid	Assembled with 3W NO 1.2mm G75 operator
Coil voltage	• Voltage and power consumption - see table
Standard protection class	IP66

Voltage & Current table

Solenoid	Voltage	Inrush [A]	Holding [A]
2W 50 Hz	V <div>+10% n-20%</div>	0.3	0.19
2W 60 Hz		0.2	0.14
3W 50/60 Hz		0.125	0.125
DC		4.5W	

Voltage & Power Consumption

V	AC (W) 50 Hz	DC (W)
	2	4.5
12	•	•
24	•	•

• Available options

How to Order

GALIT	-	PORT	VOLTAGE		MOUNTING BRACKET		WIRES		
		1/8" BSP	10	24V AC	1	without	0	two	null
		1/8" NPT	11	24V AC w/out Diode	1R	with	1	three ⁽¹⁾	a
				12V AC	3				
				12V DC	4				
				24V DC	5				
				24 Latch (23Ω)	6				
				6 Latch (4Ω)	B				
				12 Latch (9Ω)	C				
				16 Latch (12Ω)	D				

Example : GALIT-1011

GALIT pilot operated, 1/8" BSP, 24V AC with mounting bracket, two wires

GALIT	-	10	1	1
-------	---	----	---	---

(1) For Latch only

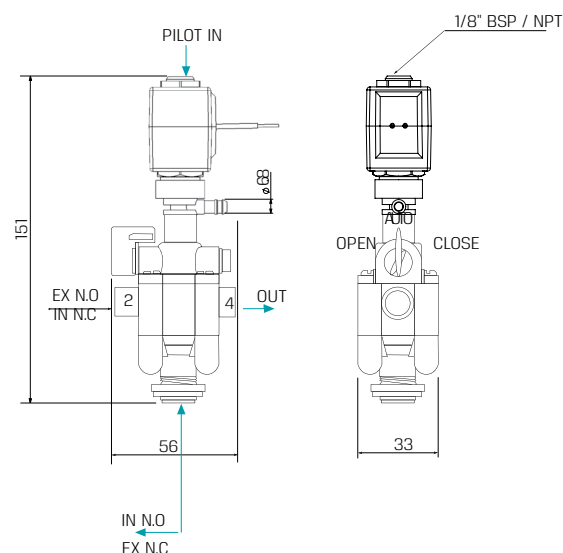
* To order valves manufactured according to your specific requirements, please contact our technical sales department.

SOLENOID VALVES

GEM-GALIT | 3 Way pilot operated NC, NO



GEM-GALIT



Technical Data

Function	3 Way NC, NO
Ports size	1/8" BSP & NPT
Orifice size	5mm
Pressure range	1 to 10 bar
Temperature range	Fluid : 5°C to 50°C Ambient : -10°C to 50°C
Materials in contact with media	Main Valve: Reinforced Nylon Solenoid Operator: Stainless Steel 300 & 400 series Seals: NBR Spring: Stainless Steel AISI 300 series
Manual override	Manual override with 3 positions : • AUTO - for automatic operation (valve is open when solenoid is energized) • MANUAL - valve is kept open • CLOSE - valve is kept closed
Solenoid	Assembled with 3W NO GEM-OG operator, 1,6
Coil voltage	• Voltage and power consumption - see table • All Baccara coil voltages are $\pm 10\%$ of nominal
Standard protection class	IP66

Voltage & Power Consumption

V	AC (W)						DC (W)		
	50 Hz			60 Hz			10	5.5	3.5
6							•	•	•
12	•			•			•	•	•
24	•	•	•	•	•	•	•		
48	•			•			•		
110	•			•	•		•		
120	•			•					
220	•	•	•	•			•		
230	•	•							
240	•			•			•		

• Available options

How to Order

GEM-GALIT	PORT	VOLTAGE	POWER	CONNECTOR	MOUNTING BRACKET
	1/8" BSP 10	w/out coil 0	No coil 0	w/out 0	w/out 0
	1/8" NPT 11	6 1	AC8W 50Hz	1 with	with ⁽²⁾ 1
		12 2	AC8W 60Hz	2 with LED	2
		24 3	DC10W	3 with bi-color LED	3
		48 4	AC5.5W 50Hz	4 flying leads coil	4
		110 5	AC5.5W 60Hz	5 with 1/2" Hub	5
		120 6	AC2.5W 50/60Hz	6 surge protection with LED	6
		220 7A	DC5.5W	7 connector with moulded cable	7
		230 7	DC3.5W	8 other	9
		240 8			
		Latch/other ⁽¹⁾ 9			

Example : GEM-GALIT-10-3110

GEM-GALIT pilot operated, 1/8" BSP, 24V AC8W 50Hz, with connector, without mounting bracket.

GEM-GALIT - 10 - 3 1 1 0

- (1) For specifying Latch type coil, please refer to How to Order table on pg 15
(2) For Latch only

* To order valves manufactured according to your specific requirements, please contact our technical sales department.

SOLENOID VALVES



* Available on selected models only

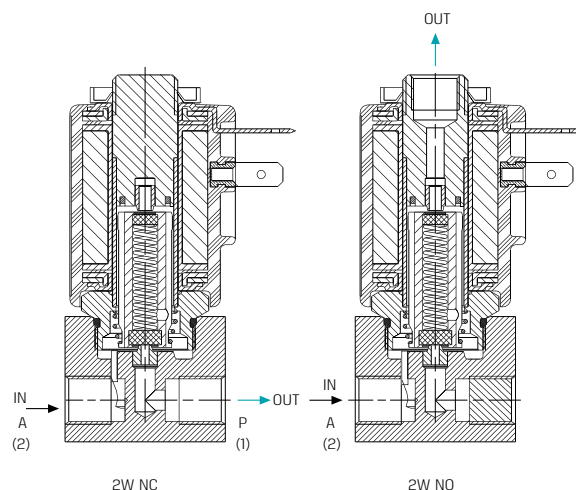
GEM-A | 1/8", 1/4" 2 Way NC, NO



GEM-A Stainless Steel



GEM-A Brass



Technical Data

Function	2 Way NC, NO
Ports size	1/8" and 1/4" BSP & NPT
Orifice size	See table
Pressure range	<ul style="list-style-type: none"> See table Valves for pressure higher than 25 bar cannot be supplied with manual override
Kv (l/min)	See table
Temperature range	Fluid : -10°C to 80°C Ambient : -10°C to 50°C
Materials in contact with media	Manual override*: Plastic, Brass screw or Brass finger knob, Stainless Steel for Stainless Steel valves * unavailable in 2W NO through base applications Main Valve: Brass or Stainless Steel AISI 316 Solenoid Operator: Stainless Steel AISI 300 & 400 series Seals: NBR, FPM (Viton®), EPDM, FFKM (Kalrez®) or PTFE
Media	Air, water, oil
Coil voltage	<ul style="list-style-type: none"> Voltage and power consumption - see table All Baccara coil voltages are $\pm 10\%$ of nominal
Standard / Certification	<ul style="list-style-type: none"> NSF/ANSI 61 AS/NZS 4020 * Available on selected models only. Please contact our technical sales department for details
Standard protection class	IP65 with connector * Option : IP67, IP68

• Latch valves are available upon request.

Max. Pressure (bar) 2W NC table

Coil Current/Power	Orifice (mm)						
	0.8	1.2	1.6	2.0	2.4	3.0	4.0
ADC *	60	50	35	20	15	10	5
AC8W, DC/10W	80	80	60	38	30	18	10
AC5.5W	80	60	40	28	20	15	6
AC2.5W	60	50	35	20	15	9	5
DC5.5W	60	30	18	12	9	6	3
DC3.5W	40	20	12	8	6	4	2
Flow factor Kv(l/min)	0.5	1.1	1.7	2.5	3.5	4.5	5

Max. Pressure (bar) 2W NO table

Coil Current/Power	Orifice (mm)					
	0.8	1.2	1.6	2.0	2.4	3.0
ADC *	25	25	25	20	15	10
Flow factor Kv(l/min)	0.5	1.1	1.4	2.5	3.0	3.5

* ADC valves are only suitable for use with AC8W or DC10W coils.

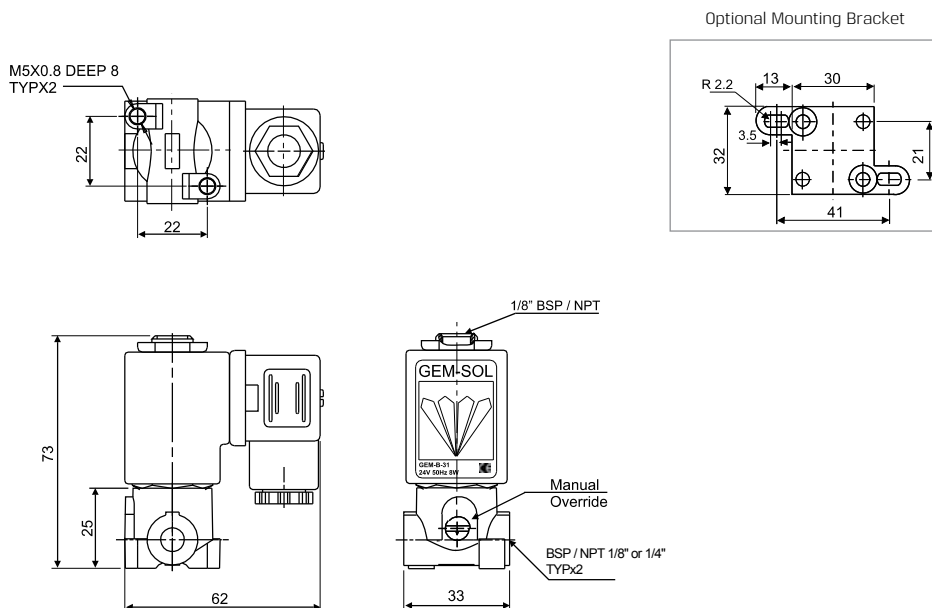
Voltage & Power Consumption

V	AC (W)						DC (W)		
	50 Hz			60 Hz					
	8	5.5	2.5	8	5.5	2.5	10	5.5	3.5
6							•	•	•
12	•			•			•	•	•
24	•	•	•	•	•	•	•		
48	•			•			•		
110	•			•	•		•		
120	•			•					
220	•	•	•	•			•		
230	•	•							
240	•			•			•		

• Available options

GEM-A | 1/8", 1/4" 2 Way NC, NO

Dimensions



Brass / Stainless Steel

How to Order

GEM-A	-	BODY	PORT		FUNCTION		ORIFICE		SEALS		MANUAL OVERRIDE		-	VOLTAGE		POWER		CONNECTOR		
		Brass	2	1/8" BSP	10	2W NC	1	0.8	1	NBR	N	None	0		W/out coil	0	No coil	0	without	0
		Stainless Steel	3	1/8" NPT	11	2W NO	2	1.2	2	FPM (Viton®)	V	Plastic	1	6	1	AC8W 50Hz	1	with	1	
				1/4" BSP	20	2W NO ⁽¹⁾ through base	2a	1.6	3	EPDM	E	Slot	2	12	2	AC8W 60Hz	2	with LED	2	
				1/4" NPT	21			2.0	4	FFKM ⁽²⁾ (Kalrez®)	K	Knob	3	24	3	DC10W	3	with bi-color LED	3	
								2.4	5	PTFE	T			48	4	AC5.5W 50Hz	4	flying leads coil	4	
								3.0	6					110	5	AC5.5W 60Hz	5	with 1/2" Hub	5	
								4.0	7					120	6	AC2.5W 50/60Hz	6	surge protection with LED	6	
														220	7A	DC5.5W	7	connector with moulded cable	7	
														230	7	DC3.5W	8	other	9	
														240	8					
														Latch/ other ⁽³⁾	9					

Example : GEM-A-21015N2-311

GEM-SOL direct operated brass, 1/8"BSP, 2W NC, 2.4 orifice, NBR, slot manual override, 24V AC8W 50Hz with connector.

Example : GEM-A-21015N2-311

GEM-SOL direct operated brass, 1/8"BSP, 2W NC, 2.4 orifice, NBR, slot manual override, 24V AC8W 50Hz with connector.

GEM-A - 2 10 1 5 N 2 - 3 1 1

(1) Option 2a : manual override is not available

(2) FFKM (Kalrez®) O-ring is available only upon request. When ordering FFKM (Kalrez®) seals, please consult with our technical sales department about O-ring compound.

(3) For specifying Latch type coil, please refer to How to Order table on pg 15.

* Note: When ordering without coil, please define what current and pressure rating is needed (DC, AC or ADC), otherwise an ADC valve will be supplied.

* To order valves manufactured according to your specific requirements, please contact our technical sales department.

SOLENOID VALVES



* Available on selected models only



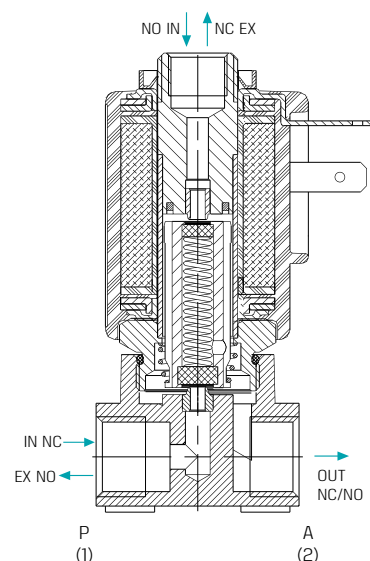
GEM-A | 1/8", 1/4" 3 Way NC, NO



GEM-A Stainless Steel



GEM-A Brass



Technical Data

Function	3 Way NC, NO
Ports size	1/8" and 1/4" BSP & NPT
Orifice size	See table
Pressure range	<ul style="list-style-type: none"> See table Valves for pressure higher than 25 bar cannot be supplied with manual override
Kv (l/min)	See table
Temperature range	Fluid : -10°C to 80°C Ambient : -10°C to 50°C
Materials in contact with media	Manual override*: Plastic, Brass screw or Brass finger knob, Stainless Steel for Stainless Steel valves * unavailable in 3W NO through base applications Main Valve: Brass or Stainless Steel AISI 316 Solenoid Operator: Stainless Steel AISI 300 & 400 series Seals: NBR, FPM (Viton®), EPDM, FFKM (Kalrez®) or PTFE
Media	Air, water, oil
Coil voltage	<ul style="list-style-type: none"> Voltage and power consumption - see table All Baccara coil voltages are ± 10% of nominal
Standard / Certification	<ul style="list-style-type: none"> NSF/ANSI 61 AS/NZS 4020 UL 429 * Available on selected models only. Please contact our technical sales department for details.
Standard protection class	IP65 with connector * Option : IP67, IP68

• Latch valves are available upon request.

Max. Pressure (bar) 3W NC table

Coil Current/Power	Orifice (mm)					
	0.8	1.2	1.6	2.0	2.4	3.0
ADC *	23	20	15	10	8	5.5
AC8W, DC10W	35	30	17	14	10	6
AC5.5W	23	20	15	10	8	5.5
AC2.5W DC5.5W DC3.5W	20	16	10	9	5	4
Flow factor Kv(l/min)	0.6	1.1	1.7	2.5	3.5	4.5

Max. Pressure (bar) 3W NO table

Coil Current/Power	Orifice (mm)					
	0.8	1.2	1.6	2.0	2.4	3.0
ADC *	25	20	15	11	8	6
AC/8W DC/10W	30	22	17	12	10	7
AC/5.5W,DC/5.5W	25	20	15	11	8	6
AC/2.5W,DC/3.5W	20	18	12	8	6	4
Flow factor Kv(l/min)	0.6	1	1.4	2.2	3.0	3.5

* ADC valves are only suitable for use with AC8W or DC10W coils.

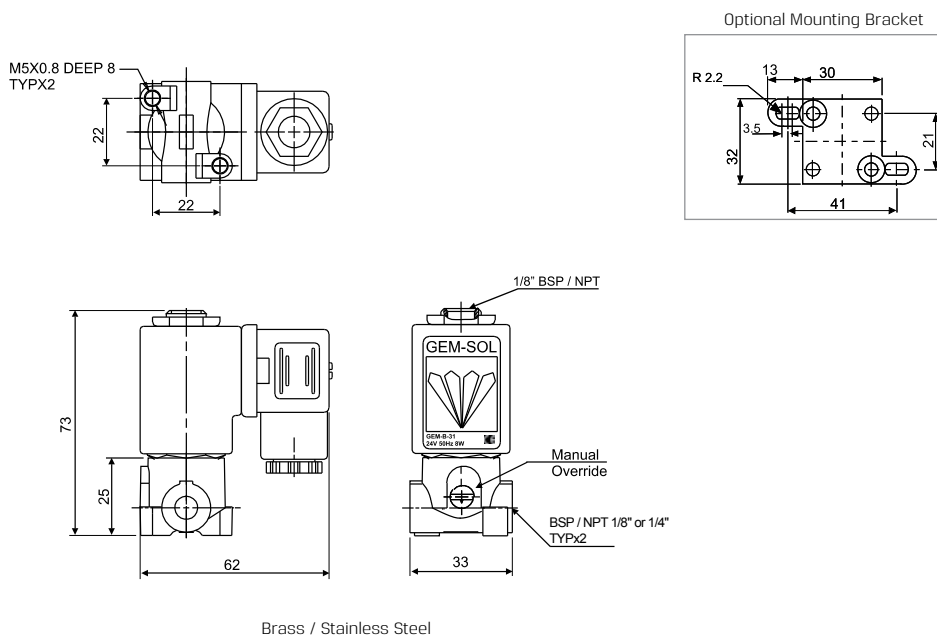
Voltage & Power Consumption

V	AC (W)						DC (W)		
	50 Hz			60 Hz					
	8	5.5	2.5	8	5.5	2.5	10	5.5	3.5
6							•	•	•
12	•			•			•	•	•
24	•	•	•	•	•	•	•		
48	•			•			•		
110	•			•	•		•		
120	•			•					
220	•	•	•				•		
230	•	•							
240	•			•			•		

• Available options

GEM-A | 1/8", 1/4" 3 Way NC, NO

Dimensions



How to Order

GEM-A	-	BODY	PORT	FUNCTION	ORIFICE	SEALS	MANUAL OVERRIDE	-	VOLTAGE	POWER	CONNECTOR								
		Brass	2	1/8" BSP	10	3W NC	3	0.8	1	NBR	N	None	0	W/out coil	0	No coil	0	without	0
		Stainless Steel	3	1/8" NPT	11	3W NO	4	1.2	2	FPM (Viton®)	V	Plastic	1	6	1	AC8W 50Hz	1	with	1
			1/4" BSP	20	3WNO ⁽¹⁾ through base	4a	1.6	3	EPDM	E	Slot	2	12	2	AC8W 60Hz	2	with LED	2	
			1/4" NPT	21		2.0	4	FFKM ⁽²⁾ (Kalrez®)	K	Knob	3	24	3	DC10W	3	with bi- color LED	3		
						2.4	5	PTFE	T			48	4	AC5.5W 50Hz	4	flying leads coil	4		
								3.0	6					110	5	AC5.5W 60Hz	5	with 1/2" Hub	5
														120	6	AC2.5W 50/60Hz	6	surge protection with LED	6
														220	7A	DC5.5W	7	connector with moulded cable	7
														230	7	DC3.5W	8	other	9
														240	8				
														Latch/ other ⁽³⁾	9				

Example : GEM-A-21035N2-311

GEM-SOL direct operated brass, 1/8"BSP, 3W NC, 2.4 orifice,
NBR, slot manual override, 24V AC8W 50Hz with connector.

GEM-A	-	2	10	3	5	N	2	-	3	1	1
-------	---	---	----	---	---	---	---	---	---	---	---

Example : GEM-A-21035N2-311

GEM-SOL direct operated brass, 1/8"BSP, 3W NC, 2.4 orifice, NBR, slot manual override, 24V AC8W 50Hz with connector.

GEM-A - 2 10 3 5 N 2 - 3 1 1

(1) Option 4a : manual override is not available

(2) FFKM (Kalrez®) O-ring is available only upon request. When ordering FFKM (Kalrez®) seals, please consult with our technical sales department about O-ring compound.

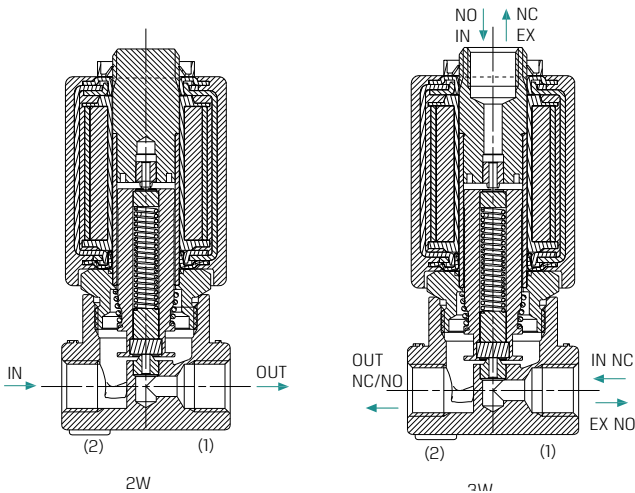
(3) For specifying Latch type coil, please refer to How to Order table on pg 15.

* Note: When ordering without coil, please define what current and pressure rating is needed (DC, AC or ADC), otherwise an ADC valve will be supplied.

* To order valves manufactured according to your specific requirements, please contact our technical sales department.

SOLENOID VALVES

GEM-A3P | Latch 3 positioning manual override 2 Way, 3 Way NC, NO



Technical Data

Function	2/2, 3 Way NC, NO
Ports size	1/8" and 1/4" BSP & NPT
Orifice size	See table
Pressure range	See table
Kv (l/min)	See table
Temperature range	Fluid : -10°C to 80°C Ambient : -10°C to 50°C
Materials in contact with media	Manual override: Plastic Main Valve: Brass Solenoid Operator: Stainless Steel AISI 300 & 400 series Seals: NBR, FPM (Viton®), EPDM, FFKM (Kalrez®) or PTFE
Media	Air, water, oil
Coil type	Latch
Standard protection class	IP65 with connector * Option : IP67, IP68

Max. Pressure (bar) 2W NC table

Orifice (mm)	0.8	1.2	1.6	2.0	2.4	3.0	4.0
Pressure (bar)	16	16	16	16	16	16	8
Flow factor Kv(l/min)	0.5	1.1	1.7	2.5	3.5	4.5	5

Max. Pressure (bar) 2W NO table

Orifice (mm)	0.8	1.2	1.6	2.0	2.4	3.0
Pressure (bar)	16	16	16	16	15	10
Flow factor Kv(l/min)	0.5	1.1	1.7	2.5	3.5	4.5

Max. Pressure (bar) 3W NC table

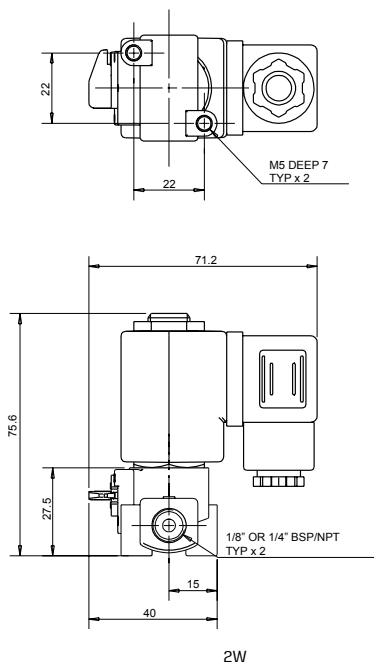
Orifice (mm)	0.8	1.2	1.6	2.0	2.4	3.0
Pressure (bar)	16	16	16	14	10	6
Flow factor Kv(l/min)	0.5	1.1	1.7	2.5	3.5	4.5

Max. Pressure (bar) 3W NO table

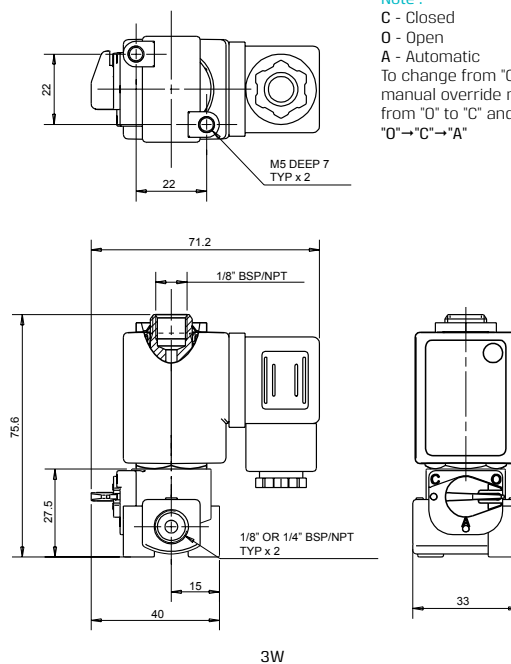
Orifice (mm)	0.8	1.2	1.6	2.0	2.4	3.0
Pressure (bar)	16	16	16	12	10	7
Flow factor Kv(l/min)	0.5	1.1	1.7	2.5	3.5	4.5

GEM-A3P | Latch 3 positioning manual override 2 Way, 3 Way NC, NO

Dimensions



2W



3W

Note :
 C - Closed
 O - Open
 A - Automatic
 To change from "O" to "A", the manual override must be turned from "O" to "C" and then to "A":
 "O" → "C" → "A"

How to Order

GEM-A3P	-	BODY	PORT	FUNCTION	ORIFICE	SEALS	-	LATCH TYPE ⁽¹⁾	CONNECTOR					
	Brass	2	1/8" BSP	10	2W NC	1	0.8	1	NBR	N	2Ω	LDO	without	0
			1/8" NPT	11	2W NO	2	1.2	2	FPM (Viton®)	V	5Ω	IL	with	1
			1/4" BSP	20	3W NC	3	1.6	3	EPDM	E	13Ω	EL	flying leads coil	4
			1/4" NPT	21	3W NO	4	2.0	4	FFKM (Kalrez®)	K	20Ω	OL	with 1/2" Hub	5
							2.4	5	PTFE	T	53Ω	DL	connector with moulded cable	7
							3.0	6					other	9
							4.0	7						

Example : GEM-A3P-21015N-LD01

GEM-SOL latch 3 positioning manual override, brass, 1/8"BSP, 2W NC, 2.4 orifice, NBR, 2Ω latch with connector.

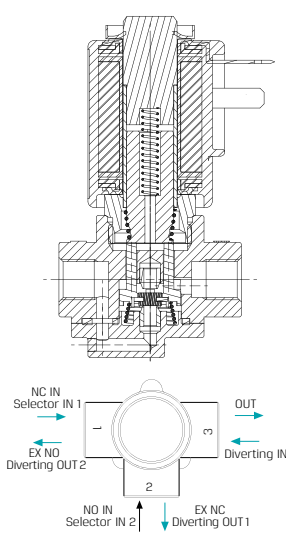
GEM-A3P - 2 10 1 5 N - LD0 1

(1) Choose latch type according to which latch system you have.

* To order valves manufactured according to your specific requirements, please contact our technical sales department.

SOLENOID VALVES

GEM-U | Universal 1/8", 1/4"



Technical Data

Function	3 Way NC, NO selecting & diverting
Ports size	1/8", 1/4" BSP & NPT
Orifice size	See table
Pressure range	See table
Kv (l/min)	See table
Temperature range	Fluid : -10°C to 80°C Ambient : -10°C to 50°C
Materials in contact with media	Main Valve: Brass Solenoid Operator: Stainless Steel AISI 300 & 400 series Seals: NBR, FPM (Viton®), EPDM
Media	Air, water, oil
Coil voltage	• Voltage and power consumption - see table • All Baccara coil voltages are ± 10% of nominal
Standard protection class	IP65 with connector * Option : IP67, IP68

• Latch valves are available upon request.

Max. Pressure (bar) universal function

Coil Current/Power	Orifice (mm)			
	1.6	2.0	2.4	3.0
AC8W	14	9	6.5	3
AC5.5W	11	8	5.5	3
DC10W	10	8	5.5	3
Flow factor Kv(l/min)	1.7	2.5	3.5	4.5

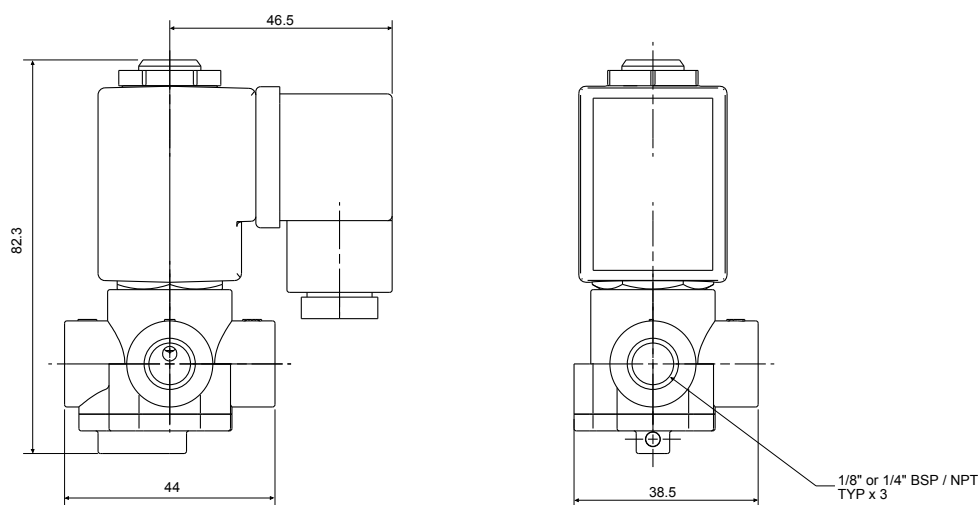
Voltage & Power Consumption

V	AC (W)						DC (W)		
	50 Hz			60 Hz					
	8	5.5	2.5	8	5.5	2.5	10	5.5	3.5
6							•		
12	•			•			•		
24	•	•		•	•		•		
48	•			•			•		
110	•			•	•		•		
120	•			•					
220	•	•		•			•		
230	•	•							
240	•			•			•		

• Available options

GEM-U | Universal 1/8", 1/4"

Dimensions



How to Order

GEM-U	-	BODY	PORT		FUNCTION		ORIFICE		SEALS		-	VOLTAGE		POWER		CONNECTOR			
		Brass	2	1/8" BSP	10	diverter ⁽¹⁾	5	1.6	3	NBR	N		W/out coil	0	No coil	0	without	0	
				1/8" NPT	11	general purpose	9	2.0	4	FPM (Viton®)	V		6	1	AC8W 50Hz	1	with	1	
				1/4" BSP	20				2.4	5	EPDM	E		12	2	AC8W 60Hz	2	with LED	2
				1/4" NPT	21				3.0	6				24	3	DC10W	3	with bi- color LED	3
														48	4	AC5.5W 50Hz	4	flying leads coil	4
													110	5	AC5.5W 60Hz	5	with 1/2" Hub	5	
													120	6			connector with moulded cable	7	
													220	7A					
													230	7					
													240	8					
													Latch/ other ⁽²⁾	9					

Example : GEM-U-21095N-311

Example : GEM-U-21095N-311

GEM-SOL direct operated, brass, 1/8"BSP, universal function, 2.4 orifice, NBR, 24V AC 8W 50Hz with connector.

GEM-U - 2 10 9 5 N - 3 1 1

(1) Use only for DC

(2) For specifying Latch type coil, please refer to How to Order table on pg 15.

* Note: When ordering without coil, please define what current and pressure rating is needed (DC, AC or ADC), otherwise an ADC valve will be supplied.

* To order valves manufactured according to your specific requirements, please contact our technical sales department.

SOLENOID VALVES

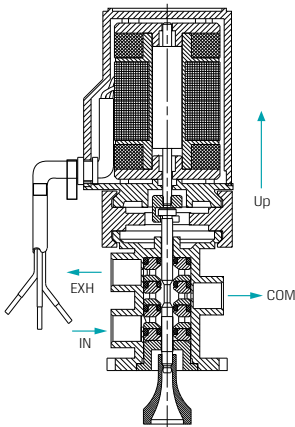
G60 | 1/8" Latch, pulse operated 3 Way



G60 Brass



G60 Plastic

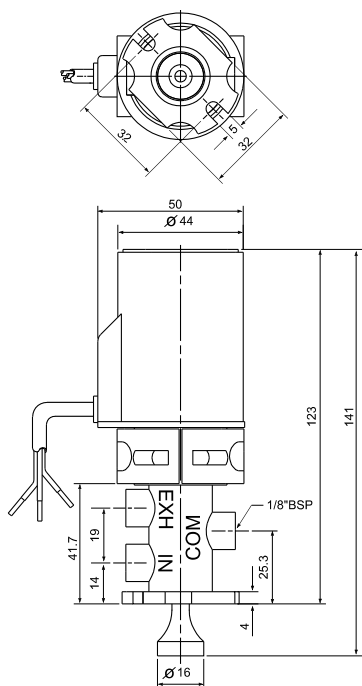


Technical Data

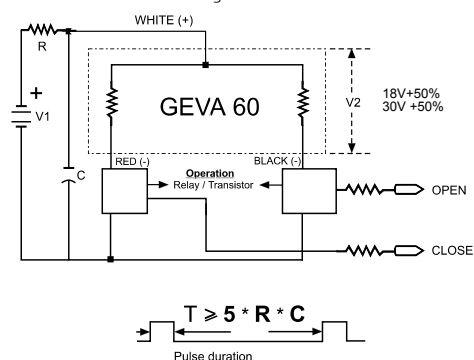
Function	3 Way
Ports size	1/8" BSP & NPT
Orifice size	3mm
Pressure range	0 to 10 bar max.
Kv (l/min)	3.2 l/min
Temperature range	Fluid : 5°C to 50°C Ambient : -10°C to 50°C
Materials in contact with media	Manual override: Push/pull - plastic Main Valve: Brass or Plastic Seals: NBR Spool: Stainless Steel AISI 303
Media	Water
Min. pulse duration	30 ms
Max. pulse duration	100 ms
Electric connection	Cable embedded in plastic
Coil resistance	<ul style="list-style-type: none"> • 5.6 - 24V • 2.5 - 12V • 5 - 24V • 3.4 - 12V
Assembly	<ul style="list-style-type: none"> • Valve assembly: In upright position only, with coil facing upwards and valve below. The cable exiting from the coil must face downwards. • Tube assembly: Only as marked on valve body. • Filtering: The fluid must be filtered at level of 120 mesh at least.
Coil voltage	• All Baccara coil voltages are ± 10% of nominal
Standard protection class	IP65

G60 | 1/8" Latch, pulse operated 3 Way

Dimensions



G60 Electrical wiring - 3 wires



- Voltage V2 is the voltage drop on the coil.
- R must be calculated so that the valve will not be operational when capacitor C is not fully charged. Minimal time between operations T must meet the following conditions : $T \geq 5 \cdot R \cdot C$
- Voltage value V2 and capacitor C are represented in the following table, minimum values :

		C(μF)	V2(V)
2 & 3 wires	G60 12V	4700	18
2 & 3 wires	G60 24V	2200	30

The G60 latch operates correctly only when activated according to the above scheme.

Please note : Driving the open and close coils of the G60 valve by switches which are connected between red or black to positive supply, or connecting free wheeling diode between red or black wire to white wire, reduces the magnetic force of the valve.

How to Order

G60	-	BASE	PORT	VOLTAGE	ELECTRIC CONNECTOR
Brass	2	1/8" BSP	10	12V DC	2
Plastic	4	1/8" NPT	11	24V DC	3

Example : G60-21031

G60 latch solenoid valve, brass, 1/8"BSP, 24V DC with 2 wires.

G60	-	2	10	3	1
-----	---	---	----	---	---

* To order valves manufactured according to your specific requirements, please contact our technical sales department.